

ビーンスターク
BeanStalk

すこやか^{EM}

How to Prepare Bean Stalk Sukoyaka M1

Always wash your hands before preparing baby formula.



Pour water that has been boiled once and is over 70 °C into a sterilized baby bottle until it reaches about 1/2 of the amount of formula you intend to make.



Hold your baby and give him/her the milk, seeing his/her eyes and talking to him/her. Tilt the feeding bottle so that the nipple is always filled with milk.



Add carefully measured, level spoonfuls of powdered formula (1 spoonful is approximately 2.6g, which will make 20ml of baby formula).



After feeding your baby, hold him/her up and rub his/her back upward or pat the back so that he/she can belch easily.



As the baby bottle is hot, wrap it in a clean towel, and shake the bottle lightly to dissolve the powdered formula.

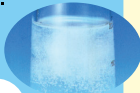


Precautions

- Please be mindful of burns if you are preparing baby formula with hot water that is over 70°C, as the baby bottle will become hot. It is recommended to wrap the bottle in a clean towel or to use an oven mitt or potholder when preparing baby formula.
- When preparing baby formula, the water that you add at the end to make the final amount of formula may be sanitary water that has been boiled once and cooled.
- Baby formula that has been prepared with hot water that is over 70°C should be placed immediately under running water or in a container filled with cold water and cooled to a temperature that is suitable for feeding (around body temperature).
- Before feeding the baby formula to your baby, always check that the formula is at a temperature suitable for feeding (around body temperature) by dropping a few drops of milk on the inside of your wrist or placing the baby bottle against the inside of your wrist.
- Even though the outside of the bottle may be cooled when cooling the bottle, the baby formula itself may still be hot. Always check the temperature of the baby formula before feeding your baby.

Add hot water that is over 70°C until it reaches the amount of formula you intend to make.

This finely powdered formula dissolves instantly.



Attach the nipple onto the baby bottle and shake again to dissolve well. Place the baby bottle in cold water to cool it down to body temperature.



Both mother and baby should be mindful of burns!